

CENTRAL TEXAS COUNCIL OF GOVERNMENTS CENTRAL TEXAS COUNCIL OF GOVERNMENTS



CLOSED LANDFILL INVENTORY

Representing: Bell, Coryell, **Hamilton**, Lampasas, Milam, Mills, San
Saba Counties



A VOLUNTARY ASSOCIATION OF LOCAL GOVERNMENTS
CENTRAL TEXAS COUNCIL OF GOVERNMENTS
PLANNING AND REGIONAL SERVICES

550 EAST 2ND AVENUE
PHONE: (254) 933-7075 FAX: (254) 939-0885
P.O. BOX 729

BELTON, TEXAS 76513-0729

Resolution 023-04-2002

A Resolution of the Central Texas Council of Governments authorizing the approval of the Closed Landfill Inventory and the adoption of said Inventory as an amendment to the Regional Solid Waste Management Plan

Whereas, the Central Texas Council of Governments was designated by the State of Texas with the responsibility to prepare the Closed Landfill Inventory for its Region encompassing the counties of Bell, Coryell, Hamilton, Lampasas, Milam, Mills, and San Saba, pursuant to §363.064(a)(10) of the Texas Health & Safety Code, as amended by Senate Bill 1447, 76th Legislature, and

Whereas, the Central Texas Council of Governments published due notice in the newspapers of record, throughout its seven county region, prior to the Public Hearing for the Closed Landfill Inventory, which was held on May 25, 2001, and

Whereas, the Central Texas Council of Governments has completed the recommend revisions to the Inventory as submitted to the Central Texas Council of Governments by the Texas Natural Resource Conservation Commission in December of 2001, and

Whereas, the Solid Waste Advisory Committee of the Central Texas Council of Governments has approved and adopted the Inventory in a meeting open to the public on April 19, 2002, now

Therefore Be It Resolved, that the Executive Committee, the governing body of the Central Texas Council of Governments does approve and adopt the Closed Landfill Inventory as an amendment to the Regional Solid Waste Management Plan and authorizes its submittal to the Texas Natural Resource Conservation Commission for approval.

Passed and adopted this 25th day of April, 2002 by the Executive Committee of the Central Texas Council of Governments.

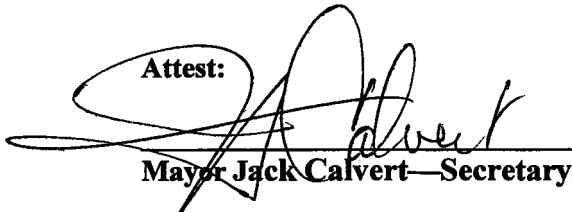


Judge Harlen Barker

Judge Harlen Barker, President—
Executive Committee

April 25, 2002

Date

Attest:


Mayor Jack Calvert—Secretary/Treasurer

CENTRAL TEXAS COUNCIL OF GOVERNMENTS
CLOSED LANDFILL INVENTORY

According to the Texas Natural Resource Conservation Commission's (TNRCC) Municipal Solid Waste regulations (31 TAC §330.951), the definition of a closed municipal solid waste landfill is as follows:

A discreet area of land or an excavation that has received only municipal solid waste or municipal solid waste combined with other solid wastes, including but not limited to construction/demolition waste, commercial solid waste, nonhazardous sludge, conditionally exempt small-quantity generator hazardous waste, and industrial solid waste, and that is not a land application unit, surface impoundment, injection well, or waste pit as those terms are now defined by 40 CFR §257.2 (EPA Regulations).

Under §363.064(a)(10) of the Texas Health & Safety Code, as amended by Senate Bill 1447, 76th Texas Legislature, all Councils of Governments are required to compile an inventory of closed municipal solid waste landfill units. Per the statutory provisions, the inventory is to include:

- a. landfill units no longer in operation
- b. the exact boundaries of each former landfill unit or, if the exact boundaries are not known, the best approximation of each unit's boundaries
- c. a map showing the approximate boundaries of each former landfill unit, if the exact boundaries are not known
- d. the current owners of the land on which the former landfill units were located
- e. the current use of the land

In compiling this inventory, the Central Texas Council of Governments (CTCOG) entered into a partnership with the Bell County Network for Education Technology (BellNET) in December of 1999. Working with a grant from the TNRCC and a School-to-Work grant from the Texas Workforce Commission, CTCOG and BellNET set out to establish a multidisciplinary approach to completing the inventory with a goal of finishing the project within the fiscal year 2002 timeframe.

Students from area colleges and universities were recruited by BellNET in June of 2000 to assist in gathering and organizing the landfill data. In exchange for their work, each student was awarded a small scholarship to the institution of their choice. Initial data collection was completed in November of 2000.

The data collection was analyzed and reviewed by CTCOG staff. Based on this data (written and verbal directions, previously drawn maps, deeds, inspection records, etc.), a map depicting each landfill and its boundaries was produced using DOQQ photographs. The site history, ownership information, current land use, and a narrative description of the location of each landfill were also included in the inventory. All maps and supporting information are derived from the best available public records—many times they are only estimations.

No claims are made as to the positional accuracy or completeness of the data or its suitability for a particular purpose. The minimum required components of the inventory, as required by the TNRCC, are listed below.

Once the initial compilation of the Inventory was complete, public meetings were held on May 10, 2001 at the Commissioner's Courtroom in Belton, Texas and on May 17, 2001 at the Commissioner's Courtroom in Lampasas, Texas. No public comment was received at either meeting. A public hearing was held on May 25, 2001 at the Commissioner's Courtroom in Belton, Texas to allow the public one final time of viewing and commenting on the Inventory before being adopted by CTCOG's governing body. No public comment was received.

The initial draft was sent to the TNRCC for comments in June of 2001, and the agency provided a list of recommended changes by December of the same year. These suggested changes were minor in nature and dealt primarily with formatting issues. The final revision of the inventory was complete in April of 2002.

The Solid Waste Advisory Committee met on April 19, 2002 and approved the Inventory and formally adopted the document as an amendment to the Regional Solid Waste Management Plan. The Executive Committee of CTCOG officially accepted this approval on April 25, 2002.

The Inventory is divided by county, however, Fort Hood is further divided into its own section despite the fact that it falls within Bell and Coryell counties. All landfills are in numerical order with the unpermitted sites listed first. Unpermitted sites are identified with a "U" number while permitted sites are identified by a "P" number. Reference attachments are listed chronologically. Please note that some of the Fort Hood site attachments are referenced by three different numbering systems—TNRCC, the Resource Conservation and Recover Act (RCRA), and Fort Hood's own numerical assignment. For example, site U2568 is a TNRCC designation, but the RCRA and Fort Hood numbers for this site are FH-003 and Site 4, respectively. In keeping with the rest of the Inventory, Fort Hood sites were arranged according to the TNRCC designation.

Two Appendices are included in the Inventory. Appendix I consists of landfill sites that were removed from the Inventory. Each of these sites is an unpermitted site with a corresponding permit number. In other words, both a permitted site and an unpermitted site had been found to encompass the same land area. For example, site U441 was found to be the same site as P1139. In all cases, the unpermitted site was removed. The corresponding permitted site remains listed in the appropriate county.

Appendix II lists landfill sites that were added to the Inventory. These sites have not been documented by the TNRCC and were discovered during the research for this Inventory. Each of these additional sites is located within Fort Hood. A temporary number has been assigned to each site. This number consists of the State assigned COG number (CTCOG is 23), T (for Temporary), and a three digit unit number beginning with 001.

7.0 MINIMUM REQUIRED COMPONENTS OF THE INVENTORY

For the most part, much of the minimum requirements of the closed landfill inventory can probably be completed without additional research (i.e., in most cases, the information collected thus far and provided to the COGs is sufficient to satisfy the basic inventory provisions of the statute, and only needs to be organized and presented in a consistent format). Further, although some of the COGs may intend to utilize geographic information systems, computer aided drawing, and supplemental databases, it is important to note that the approach to completing the inventory does not have to be highly technical or demand significant additional resources.

However, it should also be noted that taking a minimal approach may have drawbacks in the long run, particularly in regard to obtaining sufficient information to fulfill the statutory requirements beyond completing the inventory itself (i.e., notification of certain property owners). In addition, for those sites where little is known or the information available is not verified, the COG may need to consider whether further research or even a site investigation are warranted.

For permitted landfills, the inventory should include all of the landfill units at the permitted facility on one site information form, rather than listing each unit individually. In addition, the landfill units at a permitted landfill facility should not be included on the inventory until the permit for the entire facility has expired or been revoked. Prior to that time, there may be a possibility that the facility could reopen and, in any event, the facility would still be monitored by TNRCC as a permitted site.

Each COG must also evaluate the unpermitted sites listed on the statewide inventory. The COGs may exclude from the regional inventory those sites for which sufficient information is available to positively determine that the site never existed, all materials have subsequently been removed, or the site was misidentified as a closed landfill. All other sites from the statewide inventory should be reflected in the regional inventories.

However, if desired, the COG may list those sites that have been confirmed as closed landfills separate from sites that are suspected but have not been confirmed. This can be accomplished by including the high-confidence sites in one section and lower-confidence sites in another section. In both cases, the site information forms should provide information on the confidence that the COG has in the site designation and location.

Along with the completed inventory, the COG should provide TNRCC with a list of sites from the statewide inventory that were excluded from the regional inventory. For each site, the COG should provide information on why the site was excluded. This information can be submitted using the Database Revision Form provided in Appendix E.

TNRCC will provide the COGs with additional information on recent permit expirations and applications to develop over any closed landfill sites not included in the existing inventory database. These additional sites should be included in the regional inventories. Further, if a COG becomes aware of any additional closed landfill sites through its own research or investigation, the COG must determine the validity of the information and include such additional sites as appropriate in the regional inventory.

The grant contract specifies the mandatory components that must be included in the inventory to satisfy the statutory requirements. These components are outlined below, and explained further in the following subsections.

- Where known, a description of the exact boundaries of former landfill units
- If exact boundaries are not known, a description of the approximate boundaries of the former landfill units
- Where the exact boundaries are not known, include a map of the approximate boundaries of the former landfill units
- If known, the current owners of the land on which the former landfill unit is located
- If known, the current use of the land

7.1 Exact Landfill Unit Boundaries

Where known, the exact location and boundaries of the landfill units must be described. The COG will need to determine whether enough information is available to certify that the exact boundaries have been identified for a particular site. Several instances where it is recommended that the COG consider accepting the information as sufficient to describe the exact boundaries include:

- a. A certified metes and bounds description which has been publicly filed is available, such as found in an affidavit of closure;
- b. Certified engineering drawings and/or other certified surveys of the final landfill site are available in the records; or,
- c. A new survey has been conducted by the COG or other entity, preferably based on actual geographic coordinates.

7.2 Approximate Landfill Unit Boundaries

Where exact landfill unit boundaries are not known, a description of the approximate boundaries must be provided. This description should include as much information as is available to describe the location and boundaries of the site. Reference should be made to major physical and geographic features in relation to the site location. To the extent possible, it is recommended, but not required, that reference be made to the applicable basic land unit numbers (i.e., block, tract, parcel, etc.), as well as any available information on the geographic coordinates of the site and the landfill boundaries.

7.3 Maps

Where the exact location and boundaries are not known, the inventory must include a map of the approximate location and boundaries of the landfill unit. For consistency and overall usefulness of the inventory, it is recommended, but not required, that the inventory also include maps of those landfills where the exact boundaries are known.

In depicting approximate boundaries, showing only the approximate point location of a closed landfill site will not satisfy the mapping requirement. By the same token, nor will an overly broad boundary approximation, such as an entire quadrant of a county, be acceptable (i.e., the approximate boundaries indicated on a map must correlate as much as reasonably possible to the available information on the location of the site). In addition, as directed in the grant contract, all maps should show closed landfill boundaries in relation to identifying physical or geographic features, such as roads, waterways and lakes, rail lines, and/or other features.

For some of the sites, a detailed map of the landfill, based on engineering drawings or a survey, may already be available and can be included in the inventory. In most cases, however, a new map will need to be prepared.

Because a primary purpose of the inventory is to assist landowners and potential property buyers, public officials, and others in locating these sites, the COG should consider indicating on the maps the boundaries and identification numbers of affected land tracts (i.e., basic land units), to the extent that this information is available. Especially where the exact boundaries of a landfill are not known, indicating the basic land unit boundaries and unit numbers on the map may be one way to depict the approximate boundaries of the landfill in a manner that will fulfill the statutory requirement (an example map, using this approach, is provided in Appendix B).

Also, remember that even if exact boundaries are known, such as through a metes and bounds description, it may be difficult to exactly represent that site on a map. For instance, if the beginning geographic coordinates of the survey cannot be verified, the COG may not be able to present the map as "exact," even though a description of the exact boundary is available. For this reason, the maps should be considered as supplemental to the location and boundary descriptions in the inventory (e.g., metes and bounds description). The determination of whether the "exact" boundary of the landfill is known should be based on the location and boundary description and not on the accuracy of a map of the site.

For landfills where boundary lines are available, but cannot be accurately placed on a map, the COG should consider including a dotted line or other method to indicate that the position of those boundary lines is considered accurate within a certain distance or radius. Similarly, where boundary lines are not available, the COG should consider using this approach to indicate the approximate location and boundaries of the site, in relation to geographic and physical features and the boundaries of applicable basic land units (see Appendix B).

In addition to the boundary and geographic information provided on the map, it is important that the maps provide basic reference information. It is recommended that each map include the following or similar information:

- a. Title block, identifying county and landfill number;
- b. Block with map scale, orientation, COG name, and date of preparation;
- c. Sufficient geographic and physical reference features (i.e., roads, streams, political boundaries, etc.);
- c. Closed landfill unit boundaries (note as exact or approximate); and,
- d. Applicable basic land units, such as land tracts and identification numbers (as available).

It is also recommended that explanatory comments and a disclaimer be placed on each map, especially for those showing approximate boundaries. The disclaimer should note the legislative requirements.

If it has been determined that all materials were removed from the site, or that a landfill never existed in that location, it is not necessary to provide a map. However, the inventory form, as described in Section 8.0, should still be provided, stating as such.

7.4 Ownership Information

Per the grant contract, land ownership information will not be required by TNRCC, if this information is not available. However, if this information is not compiled for the inventory, the COG will later need to determine the owners of those tracts where the exact landfill boundaries are available, in order to fulfill the notification requirements of the statute.

In order to find ownership information, the COG will need to first determine the applicable land unit or units corresponding to the geographic coordinates of the site. For each basic land unit, the county appraisal records and/or deed records should show ownership information.

7.5 Land Use

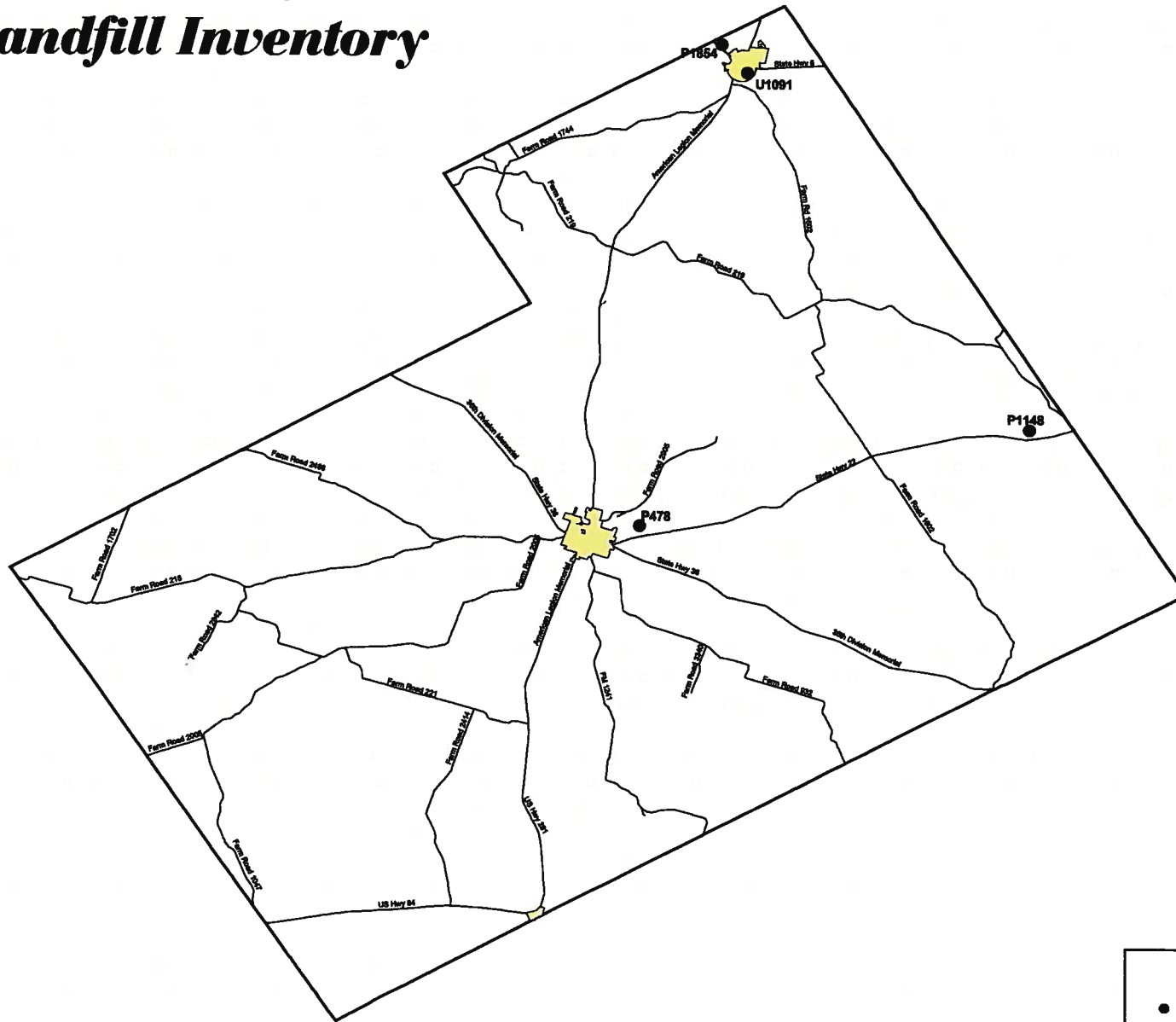
Per the grant contract, land use information will not be required by TNRCC, if this information is not available. However, land use information will be important to any subsequent work by the COG, local governments, or TNRCC to assess the risks posed by particular sites, based on land use.

TNRCC has not established standards for describing the land use for a site. To the extent possible, it may be best to provide land use information in descriptive terms. Several examples are provided below:

- commercial property with two storage warehouses located on the landfill site
- residential neighborhood with approximately 20 houses on the landfill site
- agricultural land, with no structures nearby

The extent to which a full description can be provided depends upon available information. If the COG or its consultant visually inspects the landfill site, or if analysis is done using aerial photos, then more descriptive information may be available. On the other hand, information derived from a local zoning map or land use plan may include reference to the land use designation of the area (i.e., commercial, industrial, residential, etc.).

Hamilton County Closed Landfill Inventory



Legend

- Landfill Location
- ~ Roads
- City Limits



Disclaimer: Map Produced by CTCOG in response to provisions of Senate Bill 1447, 76th Legislature of the State of Texas, as part of the Closed and Abandoned Municipal Solid Waste Landfill Inventory. This Map indicates an estimated location only, as derived from best available public records. No claims are made as to the positional accuracy or completeness of the data or it's suitability for a particular purpose.

01091

TEXAS WATER COMMISSION

Closed/Abandoned Landfill Inventory

Page 1

Date:

Name of Site 1) HICO 2) _____

County Hamilton District 03 River Basin I

Location SE edge to town

Latitude _____ Longitude _____ Code II

SE Corner Y/N

Aerial Photo Series Name _____
Num. Code _____

7.5" Topographic Series Name _____
Num. Code _____

OPERATIONAL INFORMATION

Current Property Owner _____ Code III

Address _____

Telephone _____

Dates of Operation _____ to _____ Size _____ acres/cu. yds
(circle one)

Parties That Utilized Site

Type of Waste: Household Y/N Construction/Demolition Y/N Industrial Y/N

Tires Y/N Agricultural Y/N Brush Y/N Other _____

Hazardous Waste: Unlikely Y/N
Probable Y/N
Certain Y/N

TEXAS WATER COMMISSION

Closed/Abandoned Landfill Inventory

Page 2

Site Name: _____

Date: _____

Legal Status During Operation

Legal
Unauthorized

Y/N

Y/N

Maximum Depth

_____ Feet

Code

IV

Constructed Liner

Y/N

If yes, describe

CLOSURE AND POST-CLOSURE

Final Cover

Y/N

Minimum Thickness

Code

V

Current Use

VI

Buried Utilities

Y/N

Structures

Y/N

Adjacent Structures
(within 3000 ft)

Y/N

Petroleum/Product Pipelines

Y/N

Wells (oil or water)

Y/N

Status

Dates of Observation

Seeps

Y/N

Gas

Y/N

Vegetative Distress

Y/N

Cover Erosion

Y/N

Ponded Water

Y/N

TEXAS WATER COMMISSION

Closed/Abandoned Landfill Inventory

Page 3

Site Name: Hico, Hamula

Date:

OTHER INFORMATION

Aquifer Recharge Zone Y/N Aquifer _____

Inspection Record _____

Comments Identified in map of 1968 survey sites

TEXAS WATER COMMISSION

Closed/Abandoned Landfill Inventory

EXPLANATION OF CODES

CODE

I River basin code currently utilized by MSW Division

II a) from inspection
b) from map
c) reported

III a) certain
b) reported
c) speculated

IV a) certain
b) reported
c) speculated

V a) certain
b) reported
c) speculated

VI a) residential
b) commercial
c) industrial
d) park/recreation
e) school/hospital
f) agricultural
g) road
h) municipal
i) no activity

EXHIBIT 1

Description of Property

Closed Landfill Inventory Central Texas Council of Governments

Site Identification

County Hamilton
Permitted Site Number P478

Location and Boundary

COG Confidence Level 50%
Latitude 98.0910 N
Longitude 31.7110 W
Narrative Location Description 2 miles east of Hamilton, off SH 22
Boundary Description See Deed
Basic Land Units Tract 950300, Block 1001

Land Use Vacant

Ownership Information

Current Property Owner(s) City of Hamilton
Current Owner(s) Address 200 East Main; Hamilton, TX 76531
Dates of Ownership Unknown
Land Unit 26.23 acres

Site History and Current Status

Previous Owner(s) Minnie Green
Dates of Operation 1/1/30 – 3/25/91
Enforcement History Unknown
Types of Waste Disposed All types

Reference Attachments

Deed of Ownership Feb. 1930
Shockley Engineering and Surveying Co. Field Notes March 1982
Area Map

THE STATE OF TEXAS, |
COUNTY OF HAMILTON. |

Whereas, the Hamilton National Bank, of Hamilton, Texas, is now the legal holder and owner of a certain promissory note in the sum of one thousand dollars executed by Andrew L. Green and Minnie Green, of Stephens County, Texas, in favor of Herman P. Faris, said note bearing date February second 1925, due February first 1930, and secured by deed of trust on 172.42 acres of land in Hamilton County, Texas, fully described said deed of trust recorded at length in Book 30, page 129 of the Land Mortgage Records of Hamilton County, Texas, which said record is made a part of this instrument for descriptive purposes, and,

Whereas, the said Minnie Green is now the owner of said land less 26.23 acres thereof sold by her to the City of Hamilton, in Hamilton County, Texas, on the 12th. day of February 1930, said 26.23 acres being described as follows:

BEGINNING at the N.W. corner of the W.G. Wilson survey; THENCE, S. 71 E. 1000 feet, a stone mound; THENCE, S. 35 W. 1328 feet, a stone mound for corner; THENCE, S. 73 W. 688 feet, a stone mound for corner; THENCE, S. 19 W. 254 feet, a stone mound for corner; THENCE, N. 71 W. 30 feet to fence corner; THENCE, N. 19 E. 1904 feet to place of beginning, and being entirely out of the said W.G. Wilson survey, and

Whereas, it is the desire of the said Minnie Green to have said 26.23 acres of land so conveyed to the said City of Hamilton released from the operation of said deed of trust lien, now,


THEREFORE, in consideration of the premises, and the rec of the sum of nine hundred dollars, the amount paid to the said Minnie Green for said 26.23 acres of land above described, the Hamilton National Bank, of Hamilton, Texas, the legal holder and owner of said note and deed of trust, has this day, and by these presents, remise, release and quit claim unto the said Minnie Green, her heirs and assigns, the lien heretofore existing on said 26.23 acres of land by virtue of said deed of trust; but retains its lien in full upon the remainder of said 172.42 acres of land conveyed by said deed of trust.

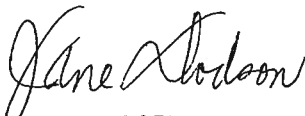
In witness whereof the Hamilton National Bank, of Hamilton, Texas, aforesaid has caused these presents to be signed by A.H. Williams, its president, thereunto duly authorized by resolution of said bank, and its common seal hereunto affixed this 21st. day of February 1930.

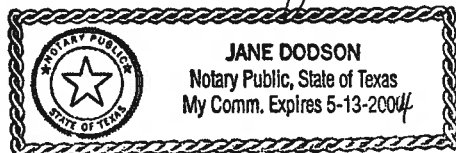


President of the Hamilton National Bank, of Hamilton, Texas.

Attest:

 Cashier
of the Hamilton National Bank,
of Hamilton, Texas.





Shockley Engineering & Surveying Co.

111 South Rice Street

Hamilton, Texas 76531

F I E L D N O T E S

THE STATE OF TEXAS

COUNTY OF HAMILTON

All that certain tract or parcel of land situated in Hamilton County, Texas and being 26.2 acres of land out of the Wm. G. Wilson Survey, and 11.73 acres out of the T.P. Steen Survey, A-1467, and including that land Deeded to the City of Hamilton as recorded in Vol. 87 page 593 of the Hamilton County Deed Records, and described by metes and bounds as a result of this survey as follows:

BEGINNING at a steel pin set at the base of a 4 inch cedar corner post set in the calculated NWC of the said Wilson Survey, said pin the NWC of this;

THENCE S70-30E along a wire fence being generally common with the Wilson/Steen survey line a distance of 201.7 feet to a steel pin set at the base of a 6 inch cedar post, an interior corner of this;

THENCE N60-19E along the wire fence crossing into the Steen Survey 502.0 feet to a steel pin set at the base of a cedar corner post, an exterior corner of this;

THENCE N83-17E along a crooked wire fence at 50 feet crossing a branch, at 110.8 feet a steel pin set at the base of a cedar corner post, an exterior corner of this;

THENCE S77-13E along a wire fence 227.0 feet to a steel pin set at the base of a 3 inch cedar corner post, an exterior corner of this;

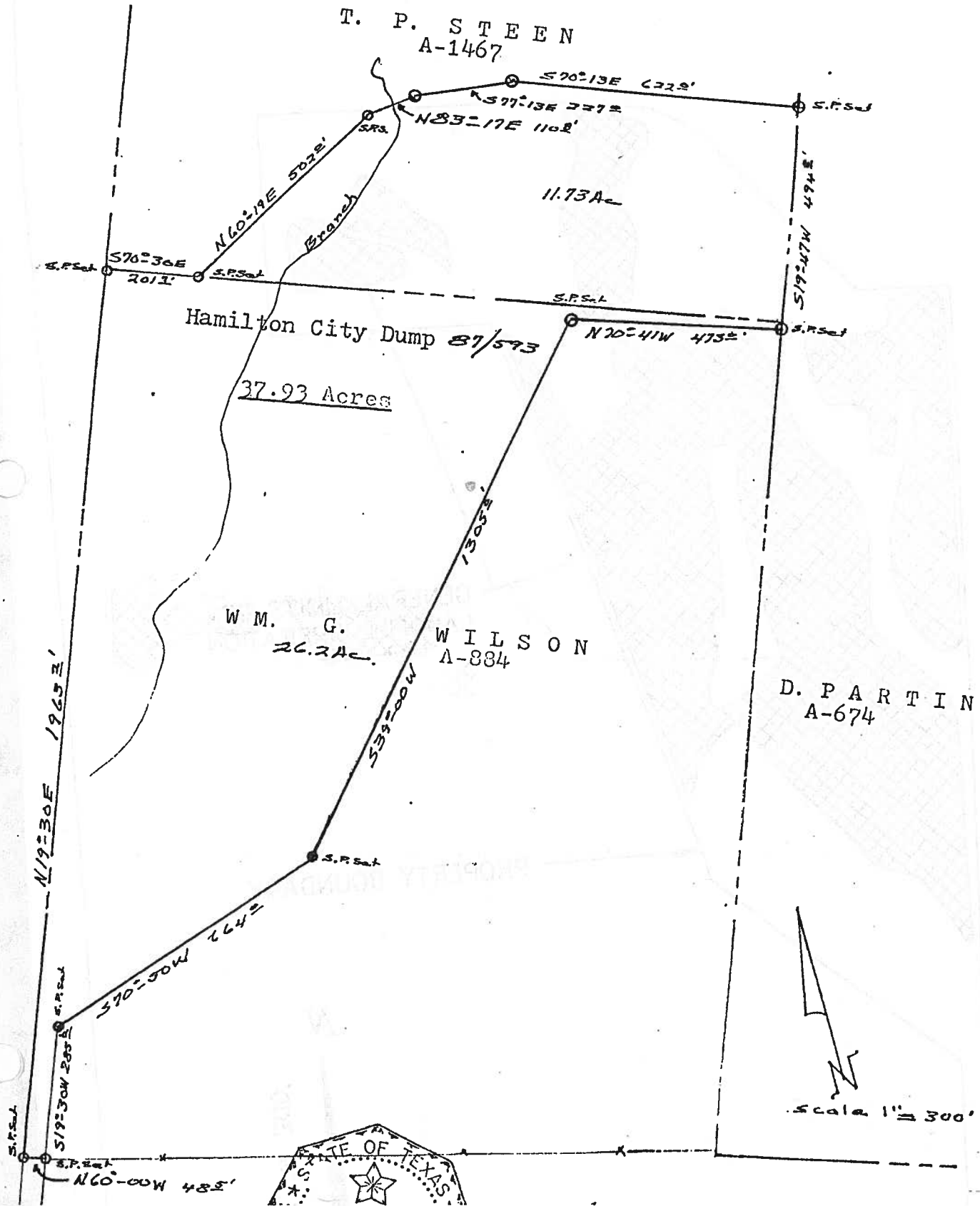
THENCE S70-13E along a wire fence 622.0 feet to a steel pin set at the base of a 6 inch cedar corner post set in the north side of a hill, said pin the NEC of this;

THENCE S19-47W along a new wire fence being generally common with the Steen East line, 494.8 feet to a steel pin set at the base of a 4 inch pipe corner post set at the calculated SWC of the said Steen Survey, said pin the SEC of this;

THENCE N70-41W along the new wire fence 473.0 feet to a steel pin set at the base of a 4 inch steel post, an interior corner of this;

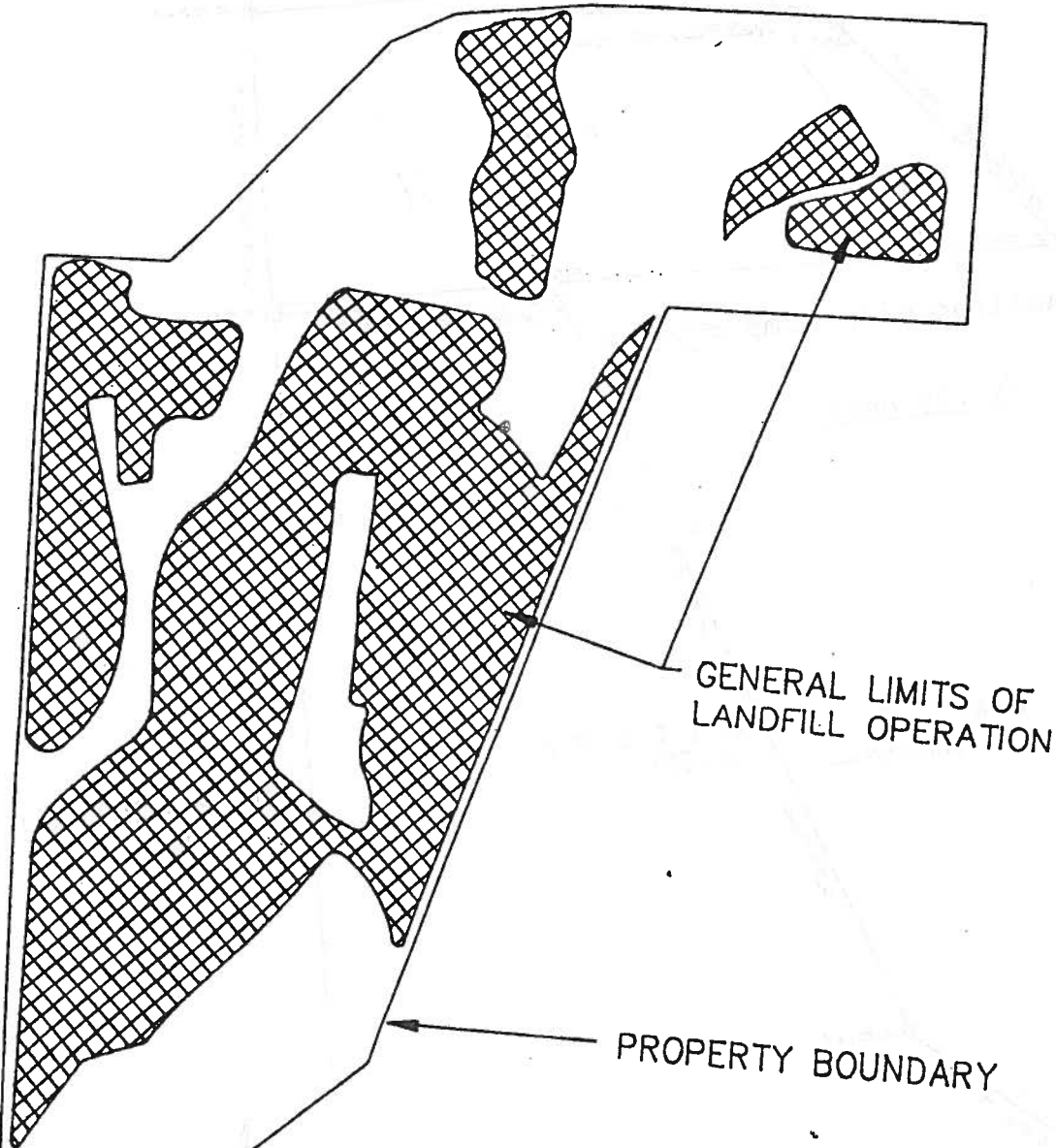
THENCE S39-00W along the curve of a crooked wire fence 1305.0 feet to a steel pin set at the base of a 4 inch pipe corner post, an exterior corner of this;

Plat showing survey of 26.2 acres of land out of the
 William G. Wilson Survey and 11.73 acres out of the T. P.
 Steen Survey, A-1467, Hamilton County, Texas.



ATTACHMENT "B"

PLAT SHOWING A 26.2 ACRE TRACT OF LAND OUT OF THE WILLIAM G. WILSON SURVEY AND THE T. P. STEEN SURVEY, A-1467, HAMILTON COUNTY, TEXAS. THIS SITE WAS USED AS A LANDFILL AND THE GENERAL LIMITS OF THE LANDFILL OPERATION HAVE BEEN INDICATED.



N



1" = 300'

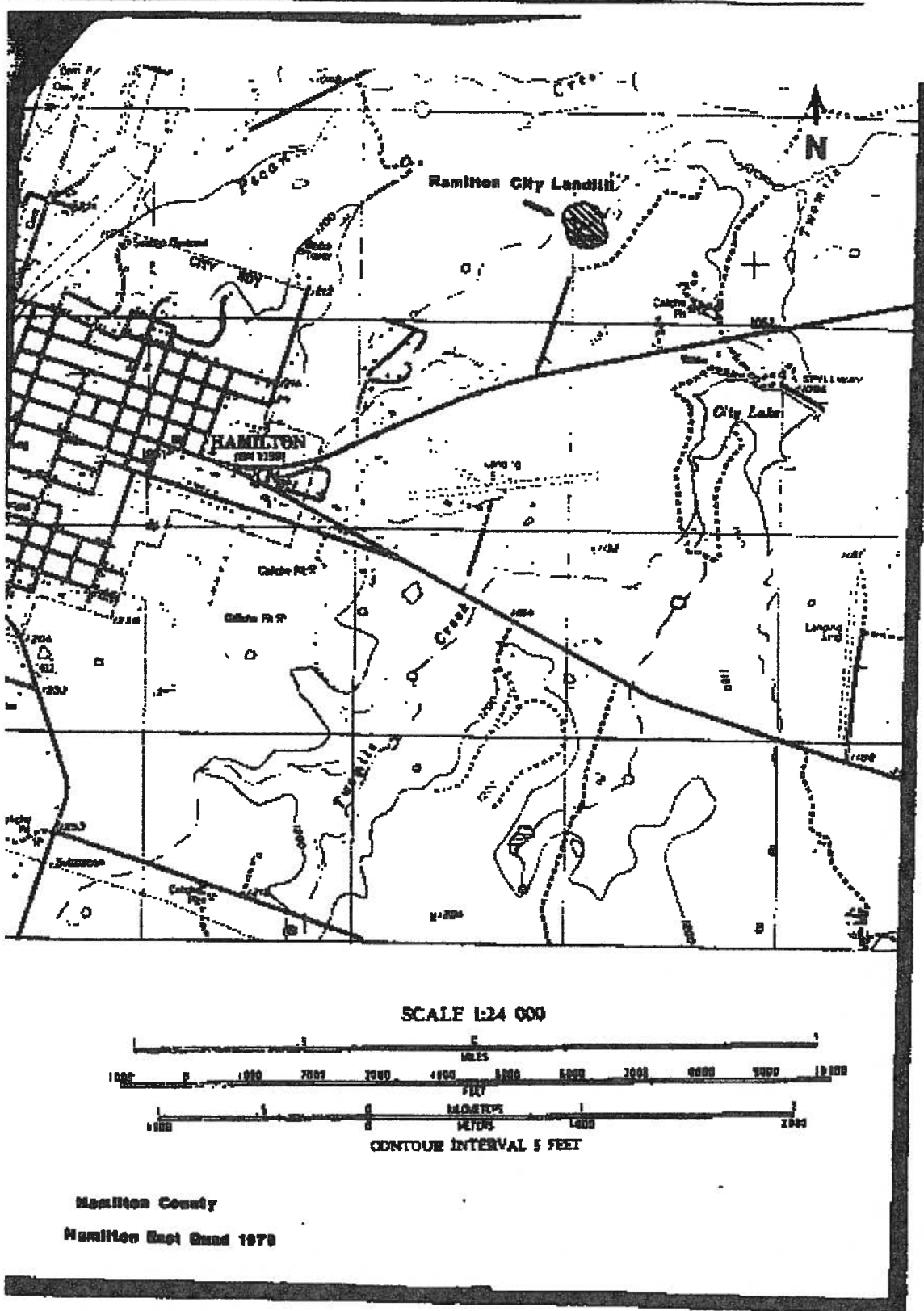


EXHIBIT 1

Description of Property

Closed Landfill Inventory Central Texas Council of Governments

Site Identification

County Hamilton
Permitted Site Number P1148

Location and Boundary

COG Confidence Level 50%
Latitude 31.7682 N
Longitude 97.8597 W
Narrative Location Description On SH 22, 3 miles West of
Cranfills Gap City Limits
Boundary Description See Affidavit to the Public March
1981
Basic Land Units Tract 950100, Block 2204

Land Use

Vacant or Agriculture

Ownership Information

Current Property Owner(s) *City of Cranfills Gap
Current Owner(s) Address Cranfills Gap City Hall; Cranfills
Gap, TX 76637
Dates of Ownership 01/01/1960 – present
Land Unit Unknown

Site History and Current Status

Previous Owner(s) Unknown
Dates of Operation 01/01/1960 – 04/10/1981
Enforcement History Unknown
Types of Waste Disposed Unknown

Reference Attachments

Affidavit to the Public March 1981
TNRCC Memo Regarding Revocation of Permit May 2000
Revocation of Permit June 2000
TNRCC Letter Regarding Revocation of Permit July 2000

*NOTE: After Notifications were mailed to landowners (May 23, 2011), the Cranfills Gap City Secretary, Elaine Chesser, was told that the City did not own the property. After much research, she found out that in 1976 when the City became incorporated, the property was auctioned off and sold via "Closed Bid" and had no information regarding new owner. Ms. Chesser said she retrieved the information from the Mayor who was in office in 1976 and he remembered the event.

527

AFFIDAVIT TO THE PUBLIC

STATE OF TEXAS

COUNTY OF Bosque

Before me, the undersigned authority, in this day personally appeared Chris M. Paulson, Jr. who, after being by me duly sworn, upon oath states that he is the record owner of that certain tract or parcel of land lying and being situated in Hamilton County, Texas, and being more particularly described as follows:

(Here insert legal description of property)

The undersigned further states that from the year 1956 to the year 1979 there was operated on the aforesaid tract of land a Solid Waste Disposal Site. Specifically, such operation was conducted on that portion of the aforesaid tract described as follows:

Entire Tract
(Here set out which portion of the tract was used for solid waste disposal. If entire tract was used, so indicate.)

WITNESS MY/OUR HAND (s) on this the 26th day of March, 1981.

City of Radville Corp
Owner
Chris M. Paulson, Jr. - Mgr
Owner

SHOWN TO AND SUBSCRIBED before me on this the 26 day of March, 1981.

Lamin E. Ferguson
Notary Public in and for
Bosque County, Texas



Granted, Sold and Conveyed, and by these presents do Grant, Sell and Convey
David O. R. Standford, Comar Tyler, and Charlie O. Johnson, the present Board of
 Directors of Crancilla Gap Mutual Water Works Company, as Trustees, and their successors in
County of Bosque *and State of* Texas *all that contain*

tract or parcel of land situated in Hamilton County, Texas, and being 6 acres of
 more or less, out of the H. E. Sorley 50 acre Survey, situated on the waters of
 the Creek, and more fully described as follows:

At the S. W. corner of the W. W. Allsberry Survey, and in the South line of
 Al Hanson tract for the N. E. corner of this tract;
 S. 60 E. 168 feet to the S. W. corner of a tract sold by N. W. Culp to Princeton
 in the S. line of the Jacob Thomas Survey for the S. E. corner of this tract;
 S. 60 W. 182 1/2 feet to the N. E. Right-of-way line of State Highway No. 22;
 In a Northwest direction with the N. E. R.O.W. line of Highway 22, 25 1/2 feet, the N.
 corner of the tract herein conveyed;
 N. 60 E. along the South line of the Al Hanson tract 1428 feet to the place of
 mining, and being all of the land owned by Grantors herein Northeast of State Highway
 22, and being a part of the same land conveyed by H. E. Sorley, and wife, Helene
 to Neal Rude and wife, Mally Rude, by deed dated July 7, 1917 and of record in
 68, page 332 of the Deed Records of Hamilton County, Texas.

Grantors herein are all of the children and heirs at law of Neal Rude and Mally Rude,
 deceased, each of whom died intestate.

There is RESERVED AND EXCEPTED from the premises herein conveyed however, unto the said
 Martha Adams, her heirs and assigns forever, an undivided one-fourth of all of the oil
 and other minerals in or under or which might be mined or produced, it being intended
 to reserve all of the minerals owned by the said Martha Adams in her undivided interest
 in said land unto herself, her heirs and assigns forever.

THE STATE OF TEXAS
 County of Hamilton

I, Earline Jones, County & District Clerk, in and for Hamilton County, Texas do hereby certify that
 the foregoing instrument of writing with its certificate of authentication, was filed in my office on
 the 26 day of March 1981, at 2:10 o'clock P. M., and duly re-
 corded on the 31 day of March 1981 at 4:45 o'clock P. M., in
 the Deed records of said County, Volume 247 Page 718

EARLINE JONES
 County & District Clerk, Hamilton County, Texas
 By *Vivian Lovell* Deputy

Texas Natural Resource Conservation Commission

INTEROFFICE MEMORANDUM

To: Robert J. Huston, Chairman
R.B. "Ralph" Marquez, Commissioner
John M. Baker, Commissioner

Date: May 22, 2000

Thru: Jeffrey A. Saitas, P.E.
Executive Director

From: *DRS*
5/22/00 Dorca Zaragoza-Stone, Manager
Municipal Solid Waste Section
Waste Permits Division

Subject: Revocation of Municipal Solid Waste Permit
City of Cranfills Gap
Permit No. MSW-1148

CHIEF CLERKS OFFICE

200 MAY 22 PM 3:52

Texas Natural Resource Conservation Commission

Pursuant to 30 Texas Administrative Code (TAC) §305.67(b), you are hereby notified of the revocation of Municipal Solid Waste Permit No. MSW-1148, issued to City of Cranfills Gap in Bosque County, Texas. The permittee requested revocation of the permit in accordance with 30 TAC §305.67.

cc: Leigh Ing, Deputy Director, Office of Permitting, Remediation & Registration
Dale Burnett, Director, Waste Permits Division

TEXAS NATURAL RESOURCE CONSERVATION COMMISSION



REVOCATION OF
MUNICIPAL SOLID WASTE PERMIT NO. MSW- 1148
ISSUED TO CITY OF CRANFILLS GAP

City of Cranfills Gap has requested revocation of Municipal Solid Waste Permit No. MSW-1148, for a municipal solid waste facility in Bosque County, Texas. The permit was issued for the construction and operation of a municipal solid waste landfill.

NOW THEREFORE, BE IT ORDERED that Permit No. MSW-1148 is hereby REVOKED.

APPROVED, ISSUED AND EFFECTIVE in accordance with 30 Texas Administrative Code, Section 305.67.

ISSUED DATE: JUN 02 2000


For the Commission

Robert J. Huston, *Chairman*
R. B. "Ralph" Marquez, *Commissioner*
John M. Baker, *Commissioner*
Jeffrey A. Saitas, *Executive Director*



TEXAS NATURAL RESOURCE CONSERVATION COMMISSION

Protecting Texas by Reducing and Preventing Pollution

July 5, 2000

City of Cranfills Gap
Cranfills Gap City Hall
Cranfills Gap, TX 76637

Re: City of Cranfills Gap's Request to Cancel MSW Permit No. 1148
Municipal Solid Waste Management Facility
Bosque County, Texas

Dear Permittee:

As you requested, this letter revokes Municipal Solid Waste Permit No. 1148. You recently requested voluntary cancellation of this municipal solid waste permit. Voluntary revocation is allowed under 30 Texas Administrative Code §305.67. No penalties are pending and no fees are due regarding this permit. Therefore, your request has been approved. Your cooperation in this matter is greatly appreciated.

If we can be of service to you in the future regarding municipal solid waste management, please feel free to contact the Municipal Solid Waste Permits Section at (512) 239-6781.

Sincerely,

A handwritten signature in cursive script that reads "Dorca Zaragoza-Stone".

Dorca Zaragoza-Stone, *Manager*
Municipal Solid Waste Permits Section
Waste Permits Division

EXHIBIT 1

Description of Property

Closed Landfill Inventory Central Texas Council of Governments

Site Identification

County Hamilton
Permitted Site Number P1854

Location and Boundary

COG Confidence Level 75%
Latitude 31.9945 N
Longitude 98.0429 W
Narrative Location Description North of Heath St., west of Old Stephenville Rd.
Boundary Description See Affidavit
Basic Land Units Tract 950100, Block 2016 and 1003

Land Use

Agriculture (livestock)

Ownership Information

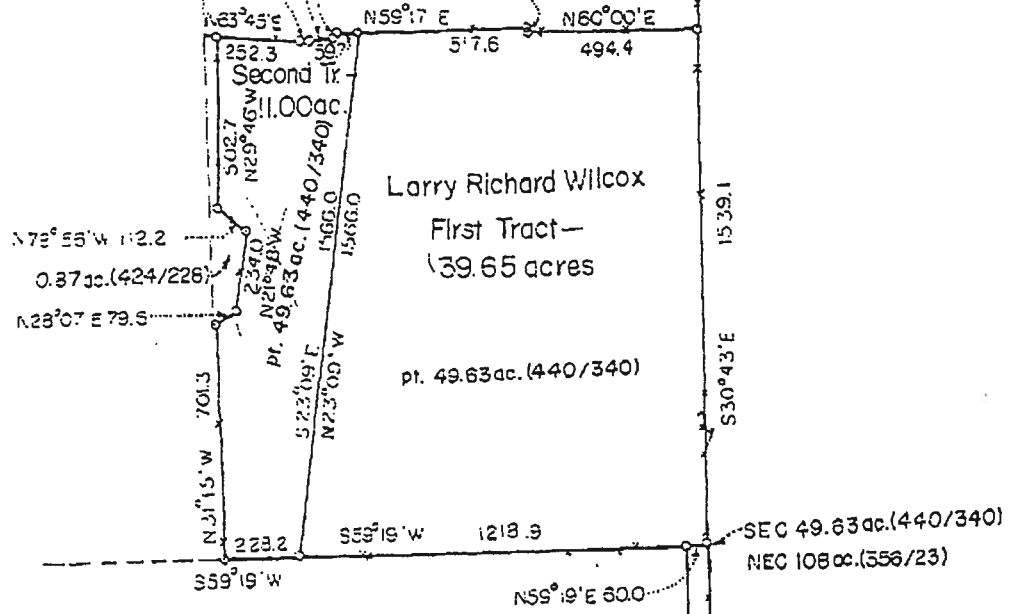
Current Property Owner(s) City of Hico
Current Owner(s) Address PO Box 533; Hico, TX 76457
Dates of Ownership March 2, 1993 – present
Land Unit 3.62 acres

Site History and Current Status

Previous Owner(s) Diane Wolfe
Dates of Operation Prior to 1988 to 2/4/93
Enforcement History Unknown
Types of Waste Disposed Unknown

Reference Attachments

Survey Map May 1988
Affidavit of Ownership March 1993
Affidavit of Ownership March 1993
Surveyed Landfills Digital Information Records



JOSIAH TAYLOR SURVEY
A-755

Harry Dwain Wolfe
108 acres (356/23)

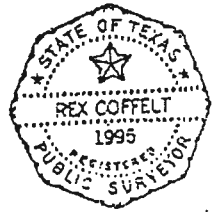
Harry Dwain Wolfe
107 acres (356/23)

Erath County
Hamilton County

A-815

1.57 ac. Lease

survey line



Rex Coffelt
5-26-88

OLD
LANDFILL

SCALE: 1" = 400'

440

AFFIDAVIT TO THE PUBLIC

STATE OF TEXAS

COUNTY OF HAMILTON

Before me, the undersigned authority, on this day personally appeared CITY OF HICO represented by Mayor Sandra L. Ethridge who, after being by me duly sworn, under oath states that he/she is the owner of record of that certain tract or parcel of land lying and being situated in Hamilton County, Texas, and being more particularly described as follows:

FIRST TRACT: Being 2.05 acres out of the James Hollinsworth Survey, A-341, being the dump ground for the City of Hico, further described as follows:

BEGINNING at an iron rod at a post at the NEC of the James Hollinsworth, for the NEC of this tract;

THENCE S. 30-16 E. with fence and the east line of the Hollinsworth Survey, 462.0 feet to an iron rod, for the SEC of this tract;

THENCE S. 75-46 W. with fence and the extension thereof, 220.2 feet to an iron rod, for the SWC of this tract;

THENCE N. 28-56 W. with fence, 400.0 feet to an iron rod at the NEC of a 65.55 acre tract owned by Fred Jaggars and described in Vol. 216 Page 411, for the NWC of this tract in the north line of the James Hollinsworth Survey;

THENCE N. 59-22 E. 202.3 feet to the place of beginning.



TRUE AND CORRECT
COPY OF ORIGINAL
FILED IN HAMILTON
COUNTY CLERK'S OFFICE

The undersigned further states that from the year 1985 there was operated on the aforesaid tract of land a Municipal Solid Waste Disposal Site. Specifically, such operation was conducted on that portion of the aforesaid tract described as follows

(SAME AS ABOVE DESCRIBED)

Further, the undersigned, CITY OF HICO was the operator of such Solid Waste Disposal Site.

Notice is hereby provided to any future owner or user of the site to consult with the Texas Water Commission prior to planning or initiating any activity infolging the disturbance of the landfill cover or monitoring system.

WITNESS MY HAND ON THIS THE 2nd day of March, 1993.

Sandra L. Ettridge
OWNER, (Mayor, City of Hico)

Sandra L. Ettridge
OPERATOR (Mayor, City of Hico)

SWORN TO AND AUBSCRIBED before me on this the 2nd day of March, 1993.

Shirley J. Lane
Notary Public in and for Hamilton County, Texas



STATE OF TEXAS
COUNTY OF HAMILTON
I, DEBBIE RUDOLPH, COUNTY CLERK, IN AND FOR THE
COUNTY AND STATE ABOVE NAMED DO HEREBY CERTIFY
THAT THE WITHIN INSTRUMENT IS TRUE AND CORRECT
COPY OF LIKE INSTRUMENT NOW ON FILE, IN MY OFFICE

DAY OF March 1993

BY Debbie Rudolph DEPUTY

Book 284 Pages 824-825

FILED FOR RECORD

MARCH 19, 1993 @ 3:25 p.m.

VIRGINIA LOVELL, CO. CLERK

RECORDED

MARCH 26, 1993

HAMILTON COUNTY, TEXAS

AFFIDAVIT TO THE PUBLIC

STATE OF TEXAS

COUNTY OF HAMILTON

Before me, the undersigned authority, on this day personally appeared

DWAIN WOLFE

who, after being by me duly sworn, under oath states that he/she is the owner of record of that certain tract or parcel of land lying and being situated in Hamilton County, Texas, and being more particularly described as follows:

SECOND TRACT: Being 1.57 acres out of the Joseph Taylor Survey, A-815, being part of "First Tract" described in a Warranty Deed from D.A. Fellers, et ux, to Harry Dwain Wolfe, further described as follows:

BEGINNING at an iron rod at the NEC of the James Hollinsworth Survey and the SEC of the Joseph Taylor Survey, for the SEC of this tract at the SEC of said Wolfe tract;

THENCE with fence and the south line of said Taylor Survey and Wolfe tract to iron rods as follows: S. 59-22 W. 202.3 feet; and S. 60-05 W. 131.3 feet to an iron rod at a corner post, for the SWC of this tract;

THENCE N: 28-11 W. with fence, 205.1 feet to an iron rod at a corner post, for the NWC of this tract;

THENCE N. 59-32 E. with fence, 329.5 feet to an iron rod at a corner post in the east line of the Taylor Survey, for the NEC of this tract;

THENCE S. 29-20 E. with fence and the east line of said Wolfe tract and Taylor Survey, 205.7 feet to the place of beginning.

THIRD TRACT: Being 0.66 acres out of the James Hollinsworth Survey, A-34 further described as follows:

BEGINNING at an iron rod at a post in the east line of the Hollinsworth Survey, said point being S. 30-16 E. 462.0 feet from the NEC of the said James Hollinsworth Survey, for the NEC of this tract;

THENCE S. 30-16 E. with fence and the east line of said Survey and the east line of a road, 1315.8 feet to an iron rod at a corner post, for the SEC of this tract;

THENCE S. 69-05 W. 20.3 feet to an iron rod, for the SWC of this tract in the west line of said road;

THENCE N. 30-25 W. with fence and the west line of said road, 1319.2 feet to an iron rod, for the NWC of this tract;

THENCE N. 75-46 E. with fence, 24.4 feet to the place of beginning.



TRUE AND CORRECT
COPY OF ORIGINAL
FILED IN HAMILTON
COUNTY CLERK'S OFFICE

The undersigned further states that from the year 1985 to the year 1992 there was operated on the aforesaid tract of land a Municipal Solid Waste Disposal Site. Specifically, such operation was conducted on that portion of the aforesaid tract described as follows:

(SAME AS ABOVE DESCRIBED)

Further, the undersigned, CITY OF HICO was the operator of such Solid Waste Disposal Site.

Notice is hereby provided to any future owner or user of the site to consult with the Texas Water Commission prior to planning or initiating any activity infolging the disturbance of the landfill cover or monitoring system.

WITNESS MY HAND ON THIS THE _____ day of _____, 1993.

Lawetta Wolfe
OWNER,

Andrew L. Echridge
OPERATOR (Mayor, City of Hico)



SWORN TO AND AUBSCRIBED before me on this the 18 day of March, 1993.

Shirley J. Lane
Notary Public in and for Hamilton County, Texas



STATE OF TEXAS)
COUNTY OF HAMILTON)
I, DEBBIE RUDOLPH, COUNTY CLERK, IN AND FOR THE
COUNTY AND STATE ABOVE NAMED DO HEREBY CERTIFY
THAT THE WITHIN INSTRUMENT IS TRUE AND CORRECT
COPY OF LIKE INSTRUMENT NOW ON FILE, IN MY OFFICE.

4th DAY OF August 1993
BY Debbie Rudolph DEPUTY

Book 284 Pages 826-827

FILED FOR RECORD
RECORDED

MARCH 19, 1993 @ 3:30 p.m.
MARCH 26, 1993

VIRGINIA LOVELL, CO. CLERK
HAMILTON COUNTY, TEXAS

Surveyed Landfills - Digital Information
(please fill out as completely as possible)

Date: 7/23 Your name: Sueh Yuen

Name of County: Hamilton Name of City: Aico

Permit # 1854a Are There Curves? (YES / NO)

Starting Coordinates (x,y): _____

Gap Calculated in MapDraw: 0.17 Acreage Calculated in MapDraw: 2.05

Acreage Given in Information Package: 2.05

Have These Files Been Saved On Network File Directory? (YES / NO)

Name of MapDraw Map File / Text File (.map/.txt)? LF 1854a.txt/map

Arc/Info COGO

Date: 7/23 Your name: Sueh Yuen

Was This Site Digitized? (YES / NO)

Error of Closure Calculated in COGO: 0.17

Acreage Value Calculated in COGO: 2.05

Has Topology Been Built for the Coverage (YES / NO)

What State Plane Zone is This County in? 5376

Name of .E00 file? _____

Has This File Been Saved On Network File Directory? (YES / NO)

Surveyed Landfills - Digital Information
(please fill out as completely as possible)

Date: 7/23 Your name: Sub-Yuen

Name of County: Hamilton Name of City: Hico

Permit # 18546 Are There Curves? (YES / NO)

Starting Coordinates (x,y): _____

Gap Calculated in MapDraw: ~~1.57~~^{0.05} Acreage Calculated in MapDraw: 1.57

Acreage Given in Information Package: 1.57

Have These Files Been Saved On Network File Directory? (YES / NO)

Name of MapDraw Map File / Text File (.map/.txt)? LF 18546.txt/map

Arc/Info COGO

Date: 7/23 Your name: Sub-Yuen

Was This Site Digitized? (YES / NO)

Error of Closure Calculated in COGO: 0.05

Acreage Value Calculated in COGO: 1.566

Has Topology Been Built for the Coverage (YES / NO)

What State Plane Zone is This County in? 5376

Name of .E00 file? _____

Has This File Been Saved On Network File Directory? (YES / NO)

Surveyed Landfills - Digital Information
(please fill out as completely as possible)

Date: 7/23 Your name: Suh Yuen

Name of County: Hamilton Name of City: Wino

Permit # 1854C Are There Curves? (YES / NO)

Starting Coordinates (x,y): _____

Gap Calculated in MapDraw: 0.06 Acreage Calculated in MapDraw: 2.66

Acreage Given in Information Package: 2.66

Have These Files Been Saved On Network File Directory? (YES / NO)

Name of MapDraw Map File / Text File (.map/.txt)? LF1854C.txt/map

Arc/Info COGO

Date: 7/31 Your name: Suh Yuen

Was This Site Digitized? (YES / NO)

Error of Closure Calculated in COGO: 0.06

Acreage Value Calculated in COGO: 0.657

Has Topology Been Built for the Coverage (YES / NO)

What State Plane Zone is This County in? 5376

Name of .E00 file? _____

Has This File Been Saved On Network File Directory? (YES / NO)
